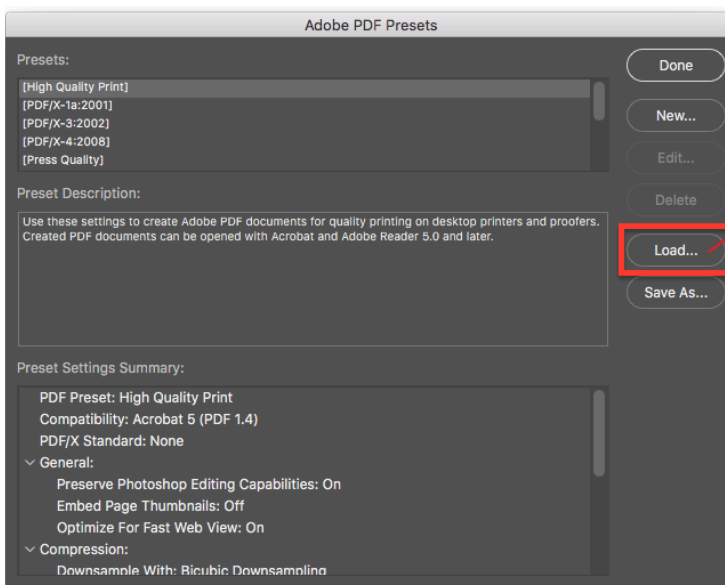



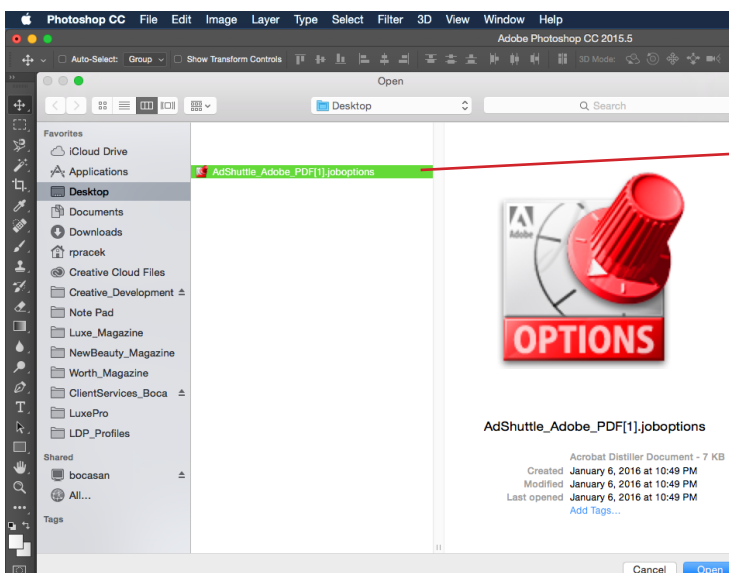
step 1

Select **Adobe PDF Presets** under Edit from the top menu



step 2

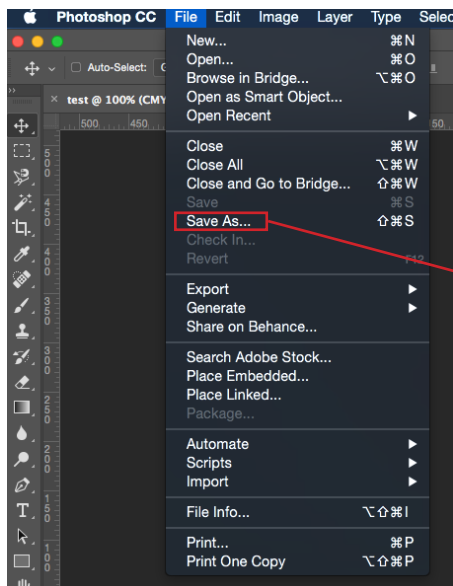
Select **Load** from the menu, prompting you to load our  AdShuttle_Adobe_PDF[1].joboptions



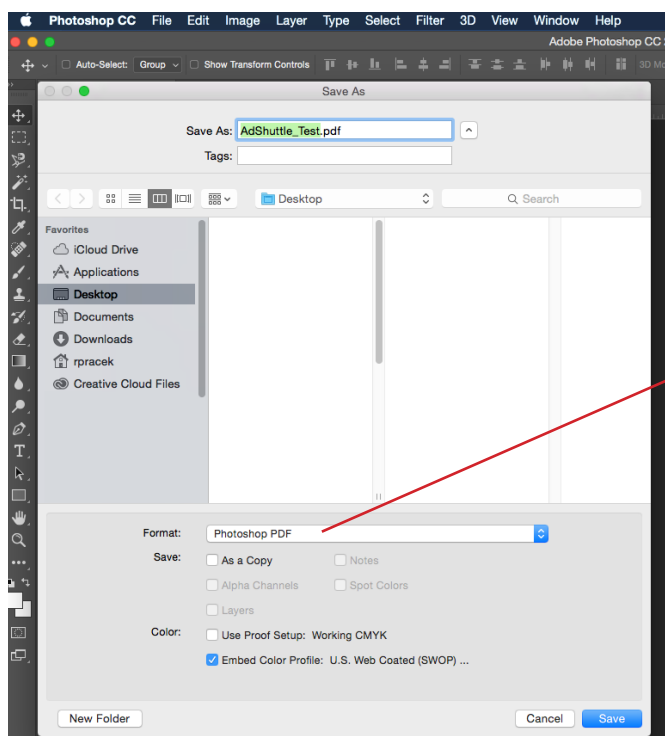
step 3

Select **Adobe AdShuttle joboptions** and then click open

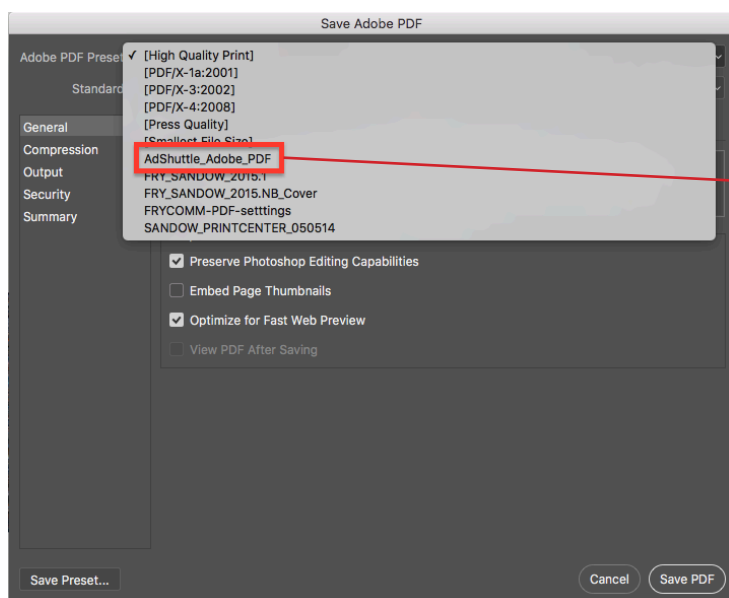
• After this process, the AdShuttle PDF Preset will be saved into your export preset options.

*step 1*

Select **Save As** under File from the top menu

*step 2*

Select **Photoshop PDF** from the Format box then click save

*step 3*

• When the preset is loaded into Photoshop, you will be able to export using our settings

Select **AdShuttle_Adobe_PDF** from the drop down menu then Save PDF