

# NY CITY'S BEST HOTELS



## The Alex Hotel

SITUATED IN MIDTOWN MAHATTAN WITH direct access to prime business, shopping, and entertainment areas, The Alex Hotel ([www.thealexhotel.com](http://www.thealexhotel.com)) is a stylish 33-story tower designed by famed residential architects Costas Kondylis Design, LLC. Opened in November 2003, the property features 203 guest rooms and suites outfitted by designer David Rockwell, each with custom-designed furniture, original artwork, fully equipped kitchens (in suites), and an array of high-tech amenities, including a DVD player, high-speed Internet access, and a flat-screen television in every bedroom, living room, and bathroom.

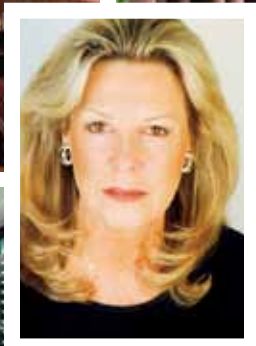
Guests eager to experience the best the property has to offer can choose the \$3,500-per night, 1,100-square-foot Penthouse. Positioned atop the hotel, it is laid out like a two-bedroom, two bathroom furnished apartment, and boasts a wraparound terrace offering exceptional views of the Chrysler Building and of New York's Fourth of

July fireworks over the East River. Guests may connect the unit with an additional one-bedroom suite for an extra \$700 per night or rent the entire 33rd floor – including the Penthouse, two one-bedroom suites, and a studio suite – for \$6,000 per night.

For those who need to stay in touch with the office or conduct business while away, The Alex offers a business center and meeting facilities, including the Riingo Restaurant mezzanine level and The Alex Penthouse. A 24-hour-access fitness center is also available for visitors eager to stay in shape during their stay, and spa services and private fitness training are available upon request.

Diners will appreciate the quality of food and beverage as award-winning chef Marcus Samuelsson brings his unique American cuisine to Riingo, a stylish, upbeat restaurant and bar on site. Riingo also provides The Alex's full room service and private dining menus.

The Alex Hotel is managed by Mary Lou Pollack, a veteran of more than 30-years in the hospitality industry. ●



Two of Riingo Restaurant's dining areas (left); General Manager Mary Lou Pollack (inset); spectacular views from the Penthouse terrace (center); living, dining, and sleeping areas of the Penthouse Suite