

# World's Best Suites

## Nemacolin Woodlands Resort



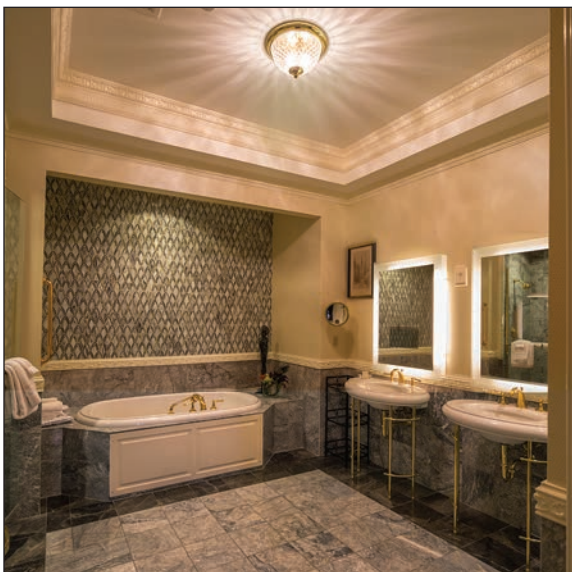
*"Guests staying in our Presidential Suite are getting a sneak-preview of the exciting things that are to come in 2014 and 2015 at Nemacolin Woodlands Resort. The suite underwent upgrades as part of our current \$30 million resort-wide renovation project. We reopened our suite in September 2013 with a complete floor-to-ceiling renovation. The new look complements a modern, European feel and all while staying true to the architecture and interior design of the Chateau Lafayette. It is the extra amenities and extraordinary Butler service that truly sets this great suite apart."*

**-Christopher Plummer, General Manager**

PERFECTLY POSITIONED IN CHARMING Farmington, Pennsylvania, Nemacolin Woodlands Resort ([nemacolin.com](http://nemacolin.com)) covers 2,000 expansive acres and boasts 318 luxurious guest rooms, suites, townhomes, and single-family homes, 124 of which are located in the Chateau Lafayette. Nemacolin offers guests over 100 treatment options at the Woodlands Spa, more than 32,000 square feet of meeting and banquet space and a private airfield, 10 dining venues and seven bars and lounges, and an extensive list of outdoor attractions including two golf courses; a 30-station sporting clays facility; the Adventure Center with a climbing wall, ropes courses, and a new 3,000-foot dueling zip line, the Fatbird SuperFlyer, which is scheduled to open Spring 2014; the 25-mile Jeep® Off-Road Driving Academy; trail rides, and dog sledding; a downhill and cross-country skiing facility; and the new Sundial Lodge featuring arcade games and eight lanes of bowling.

Guests eager for a top-of-the-line experience will want to request the newly renovated Presidential Suite, which overlooks the front entrance of the Chateau Lafayette and Pennsylvania's picturesque Laurel Highlands' mountains.

Boasting shades of brown, tan, and blue, the elegantly appointed suite holds two king beds each in a separate room and 2½ baths. The master bedroom features two chairs, a flat-screen TV, iPod alarm, closet safe, and a large walk-in closet. The second bedroom offers a similar set-up with two small closets. Each bedroom has a private bathroom complete with double pedestal sinks, vanishing television mirrors, a deep-jetted garden tub, and a separate shower. Guests enter through a foyer, with the guest bedroom and private bath on the right. A small 1/2 bath with a toilet and sink are located to the right of the main entrance, into the living room suite. The living room features a fireplace and a flat-screen TV situated on an entertainment armoire, and one sofa, two chairs, and an ottoman. A desk, dining room space, and private balcony are situated off of the living room. The entrance to the master bedroom is to the left upon entering the living room. ●



Counterclockwise from top left: Presidential Suite living area, bathroom, bedroom, and lobby