

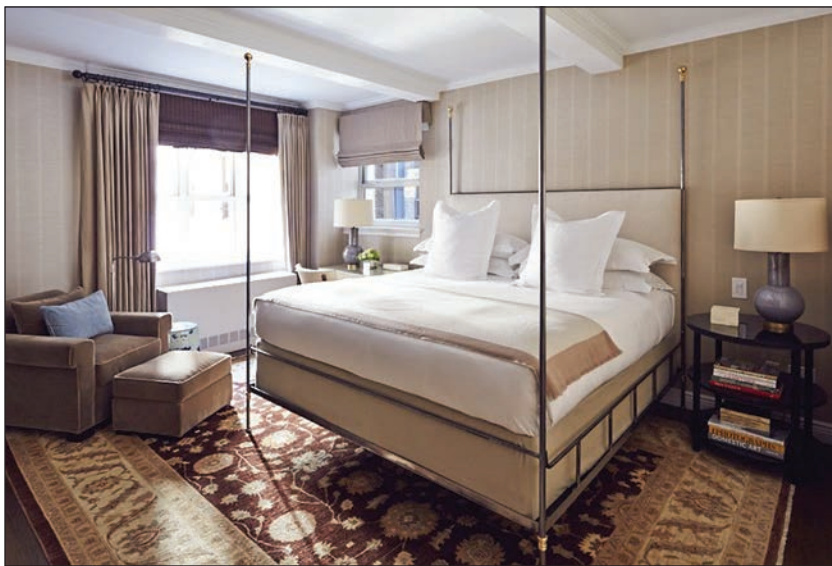
World's Best Suites

The Lowell



A 1927 LANDMARK BUILDING SITUATED OFF MADISON AVENUE on New York's exclusive Upper East Side, The Lowell (lowellhotel.com) dotes upon its guests with unique personalized service and attention to detail, maintaining 47 individually appointed suites and 27 deluxe rooms. Guests will appreciate complimentary beverages upon arrival, Voss water at turndown, and a selection of DDC 28 amenities. Most suites have wood-burning fireplaces, some have terraces, and almost all have fully equipped kitchens.

The Lowell offers guests an array of suites to choose from for an ultimately indulgent stay.



Luxurious Lowell suite living area (top right); bedroom (above); bathroom (below); and an inviting snack to enjoy in front of the fireplace (right)



Located on the 17th floor of the hotel, the luxurious Penthouse Suite, which was recently refashioned by acclaimed interior designer Michael Smith, offers guests an exceptional residential experience with two or three bedrooms, four private terraces, a wood-burning fireplace, three bathrooms, a gourmet kitchen, and a dining conservatory, all of which reflect Smith's celebrated signature style. The master bedroom features hand-painted DeGournay wallpaper from Italy and a Selene Italian Marble bathroom with a deep soaking bathtub and separate stall shower. The suite also has two flat-screen televisions.

One of five specialty suites, the Hollywood-themed space features original artwork and memorabilia, and totals more than 1,000 square feet. There are two spacious sitting areas, one with a wood-burning fireplace and the other with a large dining room table with seating for eight people, and an entertainment center with a large flat-screen television. The suite has two bathrooms and a full-service kitchen, which makes it perfect for entertaining.

In addition, there are two Lowell Specialty Suites, measuring over 1,100 square feet, which are The Lowell's largest one-bedroom suite options. This suite has two spacious sitting areas, one with a wood-burning fireplace and the other with a dining-room table with seating for eight people. The recently renovated suite features a Crema Marfil & Breccia Rosa marble bathroom with deep soaking tub, separate stall shower, and flat-screen television, as well as an apartment-sized granite topped kitchen.

No details were overlooked in the process of creating the Garden Suite, which was skillfully designed by Michael Smith. The garden-themed suite features two expansive outdoor terraces: one, a sitting area with a fountain and, the other, a cozy dining area with seating for four. Using a palette of soft blues and greens, the suite showcases Smith's affinity for nature with the bedroom's floral 18th-century Chinese inspired wallpaper by Oplontis, the kitchen's limestone floor, and the hardwood floors throughout the living area. The living room features a curated library and a wood-burning fireplace, the white marble bathroom is spacious with a deep soaking tub, and there is a full-service kitchen.



Finally, the Manhattan-themed suite features original artwork and photography, and spans over 1,000 square feet. There are two spacious private outdoor terraces along with two seating areas, one with a wood-burning fireplace and the other with a large flat-screen television. The recently renovated suite features a Crema Marfil & Breccia Rosia marble bathroom with deep soaking Jacuzzi bathtub, separate walk-in steam stall shower, and two flat-screen televisions. The suite also has a newly designed granite-topped kitchen. counters ●