

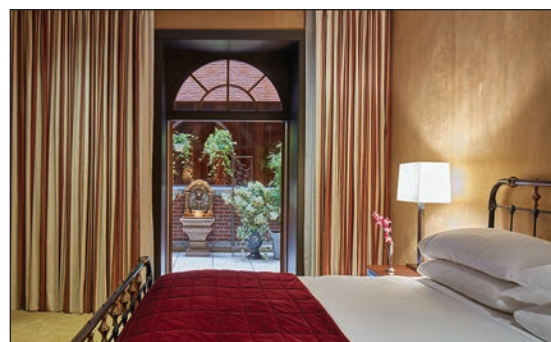
# World's Best Suites



## The Chatwal New York



THE CHATWAL NEW YORK (THECHATWALNY.COM) IS A LUXURY Collection hotel perfectly positioned in the heart of Manhattan's buzzing theater district, and recreates the iconic glamour and style of 1930s New York. The landmark Stanford White building opened in 1905 as the home of the famous Lambs, America's first professional theater club. Elegantly restored and modernized by Thierry Despont, the property is the first Starwood Luxury Collection hotel in Manhattan, as well as the first in the Virtuoso Preview program portfolio. The 76 guest rooms and suites draw inspiration from glamorous, early 20th-century travel. A range of indulgent amenities on-site include the 2,400-square-foot Elizabeth Arden Red Door Spa boasting three expertly appointed treatment rooms, three private changing suites with steam showers, and a manicure and pedicure studio; flexible spaces for meetings and private events for up to 120 people featuring ultra-modern technology



throughout; and The Lambs Club, a generous 90-seat restaurant where diners can revel in the culinary creations of Chef Geoffrey Zakarian.

The Chatwal offers an array of exquisite suite options guaranteed to appeal to any discerning traveler.

The 700-square-foot Producer Penthouse Suite with terrace and roof deck on the 10th floor offers bespoke lighting and fittings that set the stage for chic cinnamon and spice-hued leather furnishings. The king bed with a handmade Shifman mattress is dressed in fine Frette linens and a down comforter edged



in coffee-colored accents. The sleek, modern bathroom has sparkling granite countertops and a heated floor, double sinks, an integrated 19-inch mirrored television, and a Jacuzzi. The living room with fireplace and adjacent dining area with outdoor access and a pantry provide dramatic interiors enhanced by a

spiral staircase leading to a large roof deck with attractive views over West 44th Street and Manhattan's skyline. Flaunting a lavish charm and charisma, the 875-square-foot Director Suite boasts light ochre suede walls and bespoke leather-wrapped furniture, which define the contemporary king-bedded guest room plus one-and-a-half luxury granite bathrooms stocked with Asprey toiletries. A distinctively appointed living room with fireplace and dining area has a table to seat eight served by a generously sized kitchen. The unit reflects the sleek lines and Art Deco-inspired finishes exclusively designed for this chic urban space.

An Art Deco oasis boasts the largest of the seventh floor landscaped and furnished terraces at over 500 square feet of outdoor space. Flexible accommodation in the smartly arranged 729-square-foot Chatwal Suite can accommodate up to four guests. An entry-way foyer leads to the king-bedded master with signature honey-colored suede walls, a bespoke double wardrobe fitted with built-in minibar and furnished with retro touches in the spacious sitting area. The living room is furnished with a glass and chrome coffee table, large cream-colored sofa, and a leather desk/vanity combination piece. Two bathrooms in sparkly granite feature expansive tinted mirrors with integrated TV, one with a raindrop shower and the other with a bathtub, both stocked with full-size Asprey bath amenities.



Inviting seating and seasonal foliage on a landscaped terrace provides a dose of extra touches to three king-bedded suites known respectively as Ruby, Zen, and Sanctuary. Each Junior Suite King with terrace has a separate seating area echoing Art Deco-era decor in furnishings to include a large sofa, pops of color in club chairs, and a classic Noguchi coffee table. A clever 1920s-style leather-wrapped desk can instantly convert to a lighted, mirrored vanity table. On the second floor, the Ruby Suite has a brass bed and charming fountain on the brick terrace. On the seventh floor, the Zen and Sanctuary terraces have patio tables with sun umbrellas and chaise lounges. Each of the suite's two gleaming granite bathrooms features double sinks, integrated TV, a luxurious raindrop shower, and full-size Asprey bath amenities. ●



*Clockwise from top left: Producer Suite living area and dining room; Director Suite living area; Sanctuary Suite with terrace; Zen Suite terrace; Chatwal Suite terrace; Ruby Suite bedroom and terrace*